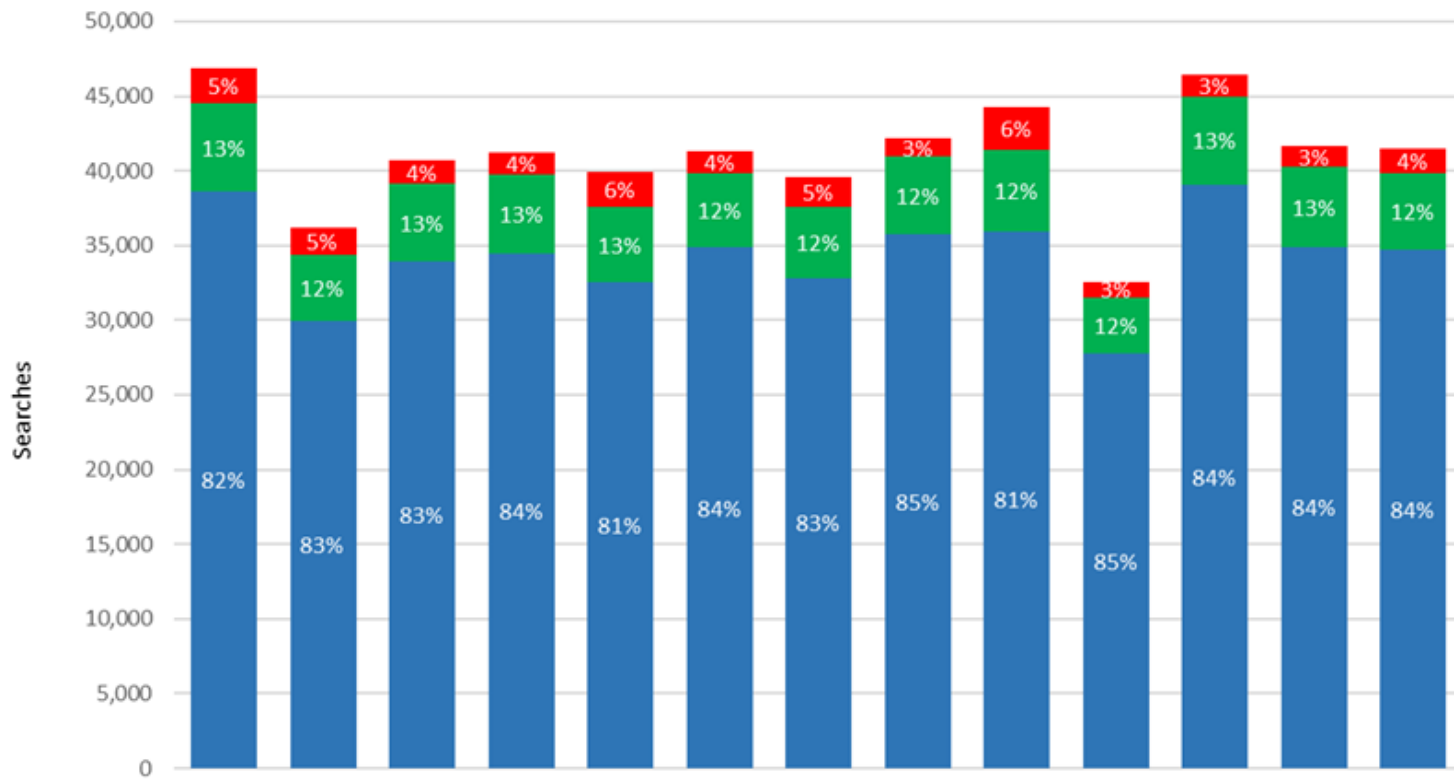


MedCo – Statistics : Search and Selections



Total Searches and Selections-March 2017 to March 2018

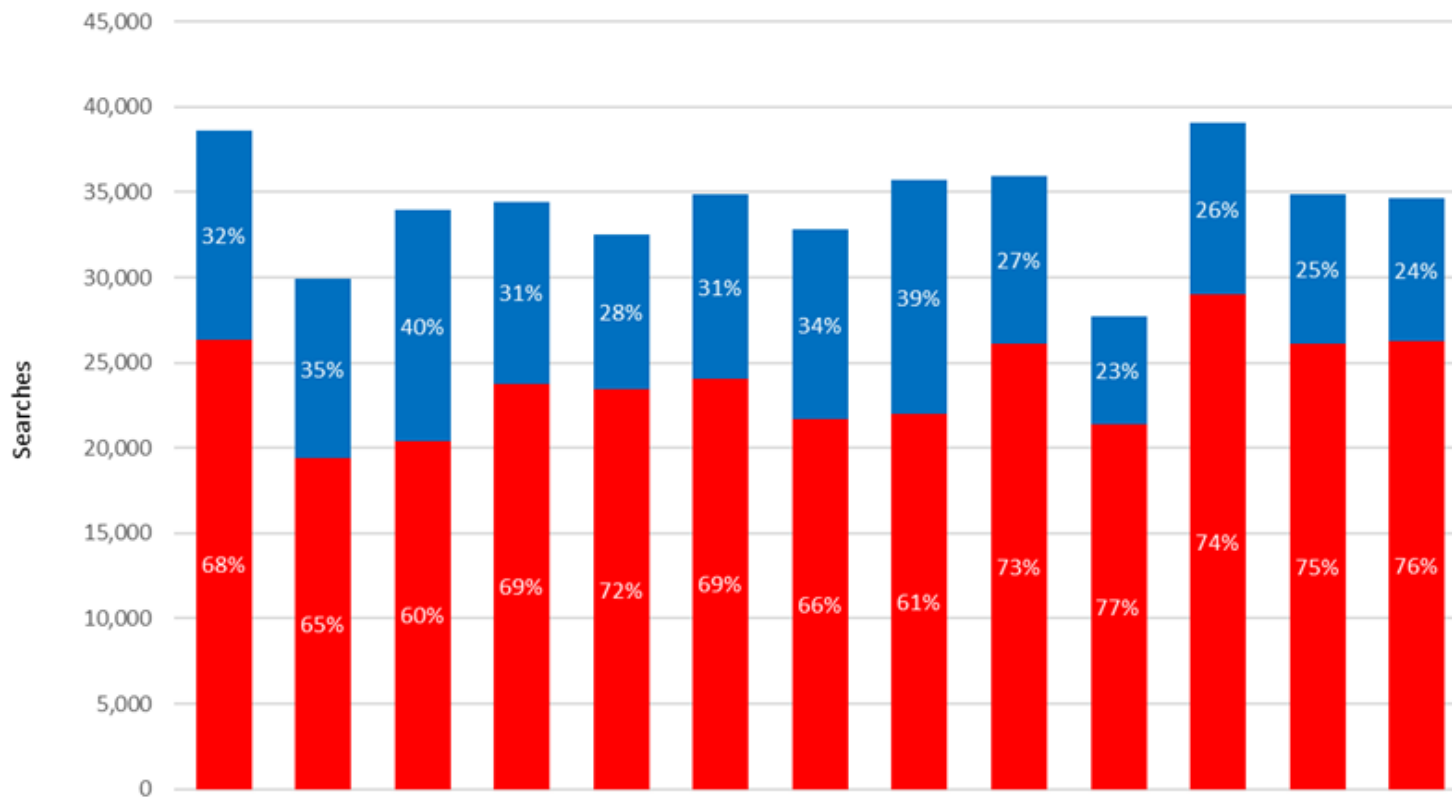


	Mar-17	Apr-17	May-17	Jun-17	Jul-17	Aug-17	Sep-17	Oct-17	Nov-17	Dec-17	Jan-18	Feb-18	Mar-18
No Selection	2,324	1,754	1,596	1,454	2,322	1,450	1,992	1,238	2,838	1,047	1,472	1,433	1,631
DMEs	5,971	4,469	5,187	5,330	5,063	4,974	4,767	5,184	5,440	3,770	5,917	5,339	5,146
MROs	38,584	29,944	33,943	34,453	32,518	34,889	32,835	35,750	35,972	27,745	39,067	34,906	34,674
Total	46,879	36,167	40,726	41,237	39,903	41,313	39,594	42,172	44,250	32,562	46,456	41,678	41,451

MedCo – Statistics : MRO Selections by Tier



MRO Selections by Tier Type-March 2017 to March 2018

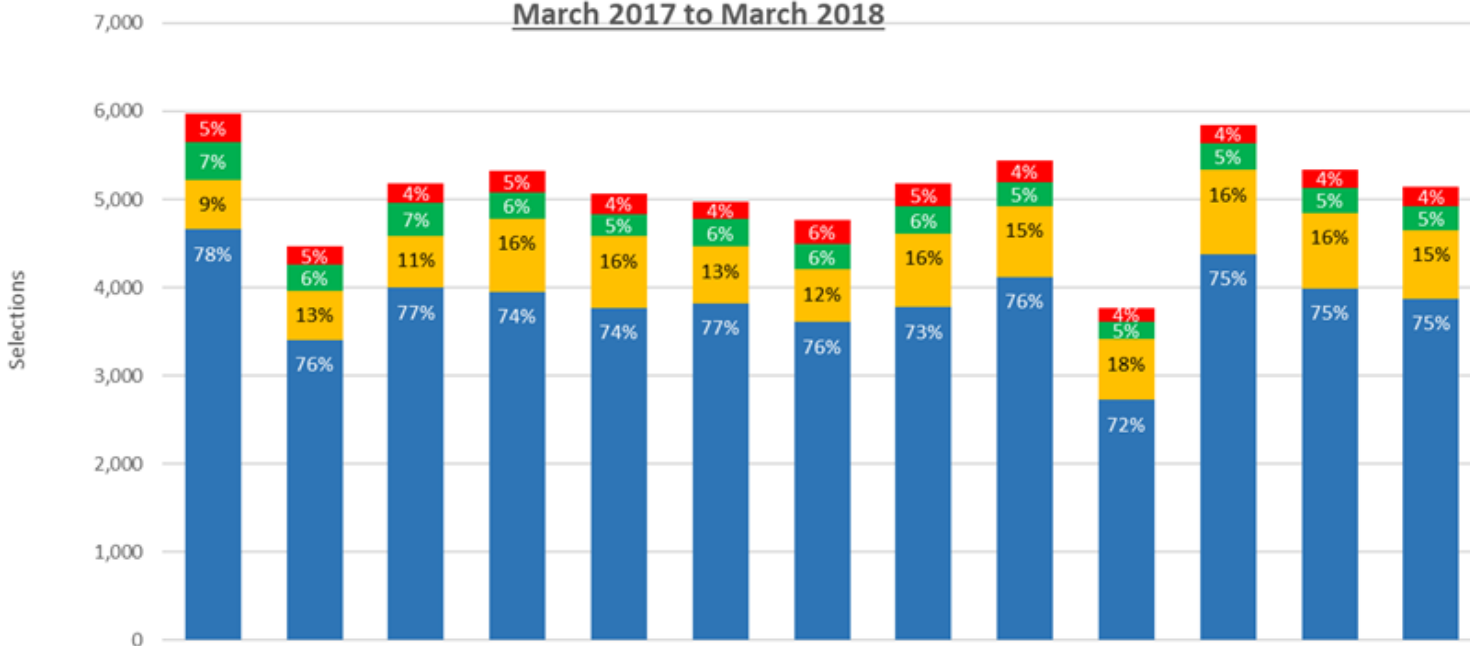


	Mar-17	Apr-17	May-17	Jun-17	Jul-17	Aug-17	Sep-17	Oct-17	Nov-17	Dec-17	Jan-18	Feb-18	Mar-18
■ T2	12,230	10,564	13,527	10,690	9,098	10,839	11,151	13,782	9,837	6,368	10,059	8,805	8,437
■ T1	26,354	19,380	20,416	23,763	23,420	24,050	21,684	21,968	26,135	21,377	29,008	26,101	26,237
Total	38,584	29,944	33,943	34,453	32,518	34,889	32,835	35,750	35,972	27,745	39,067	34,906	34,674

MedCo – Statistics : DME Selections by Type



Selection of Medical Expert by Specialism
March 2017 to March 2018



	Mar-17	Apr-17	May-17	Jun-17	Jul-17	Aug-17	Sep-17	Oct-17	Nov-17	Dec-17	Jan-18	Feb-18	Mar-18
■ Consultant Orth. Surgery	323	215	222	247	227	201	270	265	243	161	208	208	218
■ Consultant AE Medicine	422	287	375	305	255	312	293	307	273	195	305	284	275
■ Physiotherapist	567	561	592	830	815	644	595	837	802	691	952	859	782
■ General Practitioner	4,659	3,406	3,998	3,948	3,766	3,817	3,609	3,775	4,122	2,723	4,382	3,988	3,871
Total	5,971	4,469	5,187	5,330	5,063	4,974	4,767	5,184	5,440	3,770	5,847	5,339	5,146

MedCo – Statistics – Case Data Upload by Month

